

Florida KidCare Statewide Enrollment Trends

Title XXI-Funded							MediKids Full Pay (eff. 7/06)	Healthy Kids Non-Title XXI and Full Pay	Title XIX Medicaid	Total Florida KidCare Enrollment	Total Enrollment Change from Previous Month	Total Enrollment % Change from Previous Month	Title XXI Only Enrollment Change from Previous Month	Title XXI Only Enrollment % Change from Previous Month	Title XIX Only Enrollment Change from Previous Month	Title XIX Only Enrollment % Change from Previous Month
Medicaid <1 185-200% FPL	Medicaid for Teens (ended 10/02)	MediKids	CMS Network	Healthy Kids	Title XXI TOTAL											
April-98	0	0	0	0	1,526	1,526		49,474	720,984	771,984						
May-98	0	2,546	0	0	2,088	4,634		50,686	718,431	773,751	1,767	0.23%	3,108	203.67%	(2,553)	-0.35%
June-98	0	8,302	0	0	10,949	19,251		41,372	713,077	773,700	(51)	-0.01%	14,617	315.43%	(5,354)	-0.75%
July-98	0	14,342	0	0	16,566	30,908		38,491	699,497	768,896	(4,804)	-0.62%	11,657	60.55%	(13,580)	-1.90%
August-98	0	18,475	0	0	20,514	38,989		36,725	706,329	782,043	13,147	1.71%	8,081	26.15%	6,832	0.98%
September-98	0	20,909	0	0	23,316	44,225		32,424	712,915	789,564	7,521	0.96%	5,236	13.43%	6,586	0.93%
October-98	0	22,337	112	1	24,648	47,098		29,591	713,540	790,229	665	0.08%	2,873	6.50%	625	0.09%
November-98	0	23,841	305	53	27,571	51,770		28,917	729,158	809,845	19,616	2.48%	4,672	9.92%	15,618	2.19%
December-98	0	23,806	951	94	30,168	55,019		29,159	719,118	803,296	(6,549)	-0.81%	3,249	6.28%	(10,040)	-1.38%
January-99	0	24,662	1,660	260	33,373	59,955		28,589	730,971	819,515	16,219	2.02%	4,936	8.97%	11,853	1.65%
February-99	0	25,052	2,325	492	36,748	64,617		27,110	717,283	809,010	(10,505)	-1.28%	4,662	7.78%	(13,688)	-1.87%
March-99	0	25,010	2,925	966	40,825	69,726		25,751	718,281	813,758	4,748	0.59%	5,109	7.91%	998	0.14%
April-99	0	25,105	4,162	1,200	50,934	81,401		22,314	730,617	834,332	20,574	2.53%	11,675	16.74%	12,336	1.72%
May-99	0	24,869	6,398	1,807	56,907	89,981		24,326	734,660	848,967	14,635	1.75%	8,580	10.54%	4,043	0.55%
June-99	0	25,125	6,284	1,882	67,789	101,080		18,822	744,950	864,852	15,885	1.87%	11,099	12.33%	10,290	1.40%
July-99	0	24,733	8,056	2,161	70,000	104,950		21,011	751,566	877,527	12,675	1.47%	3,870	3.83%	6,616	0.89%
August-99	0	24,369	9,461	2,503	80,252	116,585		14,078	760,610	891,273	13,746	1.57%	11,635	11.09%	9,044	1.20%
September-99	0	24,005	10,536	2,770	81,007	118,318		15,551	769,968	903,837	12,564	1.41%	1,733	1.49%	9,358	1.23%
October-99	0	23,742	11,322	2,833	77,802	115,699		18,354	781,737	915,790	11,953	1.32%	(2,619)	-2.21%	11,769	1.53%
November-99	0	23,374	12,830	3,126	82,238	121,568		18,819	792,721	933,108	17,318	1.89%	5,869	5.07%	10,984	1.41%
December-99	0	22,253	14,268	3,357	86,060	125,938		19,102	795,188	940,228	7,120	0.76%	4,370	3.59%	2,467	0.31%
January-00	0	21,078	15,341	3,577	88,497	128,493		17,510	808,639	954,642	14,414	1.53%	2,555	2.03%	13,451	1.69%
February-00	0	20,254	16,408	3,830	98,129	138,621		19,899	815,060	973,580	18,938	1.98%	10,128	7.88%	6,421	0.79%
March-00	0	19,042	17,076	4,167	105,349	145,634		21,989	808,381	976,004	2,424	0.25%	7,013	5.06%	(6,679)	-0.82%
April-00	0	18,626	17,936	4,456	110,055	151,073		23,434	815,270	989,777	13,773	1.41%	5,439	3.73%	6,889	0.85%
May-00	0	18,224	19,066	4,649	114,124	156,063		24,628	817,294	997,985	8,208	0.83%	4,990	3.30%	2,024	0.25%
June-00	0	17,752	19,841	4,810	118,401	160,804		25,965	821,623	1,008,392	10,407	1.04%	4,741	3.04%	4,329	0.53%
July-00	0	17,487	19,330	4,989	120,686	162,492		27,063	863,376	1,052,931	44,539	4.42%	1,688	1.05%	41,753	5.08%
August-00	0	17,316	19,996	5,002	123,819	166,133		27,544	887,305	1,080,982	28,051	2.66%	3,641	2.24%	23,929	2.77%
September-00	0	16,635	20,252	5,098	127,685	169,670		27,549	883,575	1,080,794	(188)	-0.02%	3,537	2.13%	(3,730)	-0.42%
October-00	0	16,298	20,777	5,179	138,000	180,254		20,456	898,676	1,099,386	18,592	1.72%	10,584	6.24%	15,101	1.71%
November-00	0	15,766	21,263	5,292	141,005	183,326		22,599	904,911	1,110,836	11,450	1.04%	3,072	1.70%	6,235	0.69%
December-00	0	15,318	21,923	5,423	146,000	188,664		22,397	919,188	1,130,249	19,413	1.75%	5,338	2.91%	14,277	1.58%
January-01	0	15,059	22,617	5,461	149,660	192,797		22,777	932,898	1,148,472	18,223	1.61%	4,133	2.19%	13,710	1.49%
February-01	0	14,519	22,964	5,528	154,252	197,263		22,777	940,480	1,160,520	12,048	1.05%	4,466	2.32%	7,582	0.81%
March-01	0	14,239	23,595	5,724	159,247	202,805		22,820	955,250	1,180,875	20,355	1.75%	5,542	2.81%	14,770	1.57%
April-01	52	13,509	25,214	5,950	166,882	211,607		22,642	959,623	1,193,872	12,997	1.10%	8,802	4.34%	4,373	0.46%
May-01	204	12,776	26,014	6,069	172,819	217,882		23,044	957,888	1,198,814	4,942	0.41%	6,275	2.97%	(1,735)	-0.18%
June-01	375	12,023	26,596	6,216	176,469	221,679		23,404	969,833	1,214,916	16,102	1.34%	3,797	1.74%	11,945	1.25%
July-01	520	11,577	25,929	6,286	180,319	224,631		23,247	974,204	1,222,082	7,166	0.59%	2,952	1.33%	4,371	0.45%
August-01	612	10,771	26,530	6,377	183,131	227,421		23,282	970,842	1,221,545	(537)	-0.04%	2,790	1.24%	(3,362)	-0.35%
September-01	746	10,258	26,719	6,461	187,015	231,199		23,166	989,822	1,244,187	22,642	1.85%	3,778	1.66%	18,980	1.96%
October-01	863	9,566	26,992	6,535	191,091	235,047		22,652	994,771	1,252,470	8,283	0.67%	3,848	1.66%	4,949	0.50%
November-01	977	8,671	27,450	6,659	196,841	240,598		22,745	1,002,258	1,265,601	13,131	1.05%	5,551	2.36%	7,487	0.75%

Title XXI-Funded																	
	Medicaid <1 185-200% FPL	Medicaid for Teens (ended 10/02)	MediKids	CMS Network	Healthy Kids	Title XXI TOTAL	MediKids Full Pay (eff. 7/06)	Healthy Kids Non-Title XXI and Full Pay	Title XIX Medicaid	Total Florida KidCare Enrollment	Total Enrollment Change from Previous Month	Total Enrollment % Change from Previous Month	Title XXI Only Enrollment Change from Previous Month	Title XXI Only Enrollment % Change from Previous Month	Title XIX Only Enrollment Change from Previous Month	Title XIX Only Enrollment % Change from Previous Month	
December-01	1,064	8,035	28,446	6,760	202,965	247,270		22,977	1,018,591	1,288,838	23,237	1.84%	6,672	2.77%	16,333	1.63%	
January-02	1,162	7,528	28,017	6,792	206,043	249,542		23,225	1,031,548	1,304,315	15,477	1.20%	2,272	0.92%	12,957	1.27%	
February-02	1,265	6,744	27,933	6,908	208,242	251,092		23,567	1,033,308	1,307,967	3,652	0.28%	1,550	0.62%	1,760	0.17%	
March-02	1,360	6,274	27,776	7,051	210,669	253,130		24,135	1,046,273	1,323,538	15,571	1.19%	2,038	0.81%	12,965	1.25%	
April-02	1,415	5,790	28,195	7,290	214,571	257,261		24,805	1,056,710	1,338,776	15,238	1.15%	4,131	1.63%	10,437	1.00%	
May-02	1,371	5,221	29,258	7,467	216,827	260,144		25,853	1,063,868	1,349,865	11,089	0.83%	2,883	1.12%	7,158	0.68%	
June-02	1,371	4,691	29,611	7,546	218,160	261,379		25,726	1,078,627	1,365,732	15,867	1.18%	1,235	0.47%	14,759	1.39%	
July-02	1,374	3,629	30,240	7,665	221,370	264,278		24,480	1,087,538	1,376,296	10,564	0.77%	2,899	1.11%	8,911	0.83%	
August-02	1,345	2,803	30,939	7,611	221,952	264,650		24,762	1,088,635	1,378,047	1,751	0.13%	372	0.14%	1,097	0.10%	
September-02	1,348	2,466	30,774	7,684	223,457	265,729		24,843	1,108,434	1,399,006	20,959	1.52%	1,079	0.41%	19,799	1.82%	
October-02	1,362	1,906	31,189	7,791	228,620	270,868		23,945	1,107,517	1,402,330	3,324	0.24%	5,139	1.93%	(917)	-0.08%	
November-02	1,417		31,043	7,928	232,559	272,947		24,031	1,128,274	1,425,252	22,922	1.63%	2,079	0.77%	20,757	1.87%	
December-02	1,453		31,426	8,055	240,335	281,269		24,543	1,135,987	1,441,799	16,547	1.16%	8,322	3.05%	7,713	0.68%	
January-03	1,472		33,217	8,215	244,420	287,324		25,116	1,132,725	1,445,165	3,366	0.23%	6,055	2.15%	(3,262)	-0.29%	
February-03	1,482		33,535	8,339	249,423	292,779		26,082	1,137,956	1,456,817	11,652	0.81%	5,455	1.90%	5,231	0.46%	
March-03	1,508		34,086	8,622	256,267	300,483		26,908	1,143,940	1,471,331	14,514	1.00%	7,704	2.63%	5,984	0.53%	
April-03	1,463		34,970	8,927	265,777	311,137		26,890	1,145,389	1,483,416	12,085	0.82%	10,654	3.55%	1,449	0.13%	
May-03	1,401		36,043	9,116	268,327	314,887		27,249	1,139,837	1,481,973	(1,443)	-0.10%	3,750	1.21%	(5,552)	-0.48%	
June-03	1,431		36,517	9,297	270,438	317,683		27,119	1,149,528	1,494,330	12,357	0.83%	2,796	0.89%	9,691	0.85%	
July-03	1,454		37,744	9,698	277,859	326,755		27,693	1,146,925	1,501,373	7,043	0.47%	9,072	2.86%	(2,603)	-0.23%	
August-03	1,453		38,435	9,723	280,968	330,579		25,169	1,157,081	1,512,829	11,456	0.76%	3,824	1.17%	10,156	0.89%	
September-03	1,488		37,538	9,558	273,647	322,231		24,399	1,166,694	1,513,324	495	0.03%	(8,348)	-2.53%	9,613	0.83%	
October-03	1,517		37,487	9,586	274,407	322,997		28,208	1,166,047	1,517,252	3,928	0.26%	766	0.24%	(647)	-0.06%	
November-03	1,534		36,873	9,642	276,355	324,404		23,814	1,184,060	1,532,278	15,026	0.99%	1,407	0.44%	18,013	1.54%	
December-03	1,547		36,700	9,599	273,236	321,082		23,445	1,183,980	1,528,507	(3,771)	-0.25%	(3,322)	-1.02%	(80)	-0.01%	
January-04	1,492		35,170	9,573	268,987	315,222		23,118	1,176,007	1,514,347	(14,160)	-0.93%	(5,860)	-1.83%	(7,973)	-0.67%	
February-04	1,501		34,405	9,619	269,109	314,634		22,925	1,179,978	1,517,537	3,190	0.21%	(588)	-0.19%	3,971	0.34%	
March-04	1,497		33,384	9,569	264,198	308,648		22,494	1,182,277	1,513,419	(4,118)	-0.27%	(5,986)	-1.90%	2,299	0.19%	
April-04	1,473		31,756	10,434	293,026	336,689		22,619	1,184,898	1,544,206	30,787	2.03%	28,041	9.09%	2,621	0.22%	
May-04	1,452		35,724	10,211	287,647	335,034		22,435	1,194,547	1,552,016	7,810	0.51%	(1,655)	-0.49%	9,649	0.81%	
June-04	1,292		35,916	10,138	284,370	331,716		22,378	1,196,842	1,550,936	(1,080)	-0.07%	(3,318)	-0.99%	2,295	0.19%	
July-04	1,240		35,040	10,053	284,948	331,281		21,496	1,187,878	1,540,655	(10,281)	-0.66%	(435)	-0.13%	(8,964)	-0.75%	
August-04	1,262		34,157	9,846	280,102	325,367		21,001	1,191,377	1,537,745	(2,910)	-0.19%	(5,914)	-1.79%	3,499	0.29%	
September-04	1,273		33,343	9,751	279,146	323,513		20,713	1,194,969	1,539,195	1,450	0.09%	(1,854)	-0.57%	3,592	0.30%	
October-04	1,248		32,140	9,740	280,134	323,262		21,371	1,193,093	1,537,726	(1,469)	-0.10%	(251)	-0.08%	(1,876)	-0.16%	
November-04	1,271		31,130	9,654	277,070	319,125		21,782	1,203,805	1,544,712	6,986	0.45%	(4,137)	-1.28%	10,712	0.90%	
December-04	1,229		29,497	8,791	231,200	270,717		19,447	1,200,948	1,491,112	(53,600)	-3.47%	(48,408)	-15.17%	(2,857)	-0.24%	
January-05	1,248		23,915	8,389	218,657	252,209		18,139	1,204,874	1,475,222	(15,890)	-1.07%	(18,508)	-6.84%	3,926	0.33%	
February-05	1,259		20,986	7,935	199,986	230,166		20,258	1,211,658	1,462,082	(13,140)	-0.89%	(22,043)	-8.74%	6,784	0.56%	
March-05	1,300		18,670	7,952	198,094	226,016		20,425	1,218,642	1,465,083	3,001	0.21%	(4,150)	-1.80%	6,984	0.58%	
April-05	1,320		17,970	7,807	193,436	220,533		20,473	1,228,081	1,469,087	4,004	0.27%	(5,483)	-2.43%	9,439	0.77%	
May-05	1,289		16,926	7,690	182,113	208,018		26,725	1,237,346	1,472,089	3,002	0.20%	(12,515)	-5.67%	9,265	0.75%	
June-05	1,254		16,004	7,728	178,997	203,983		26,157	1,249,473	1,479,613	7,524	0.51%	(4,035)	-1.94%	12,127	0.98%	
July-05	1,223		15,833	7,656	177,721	202,433		26,009	1,254,274	1,482,716	3,103	0.21%	(1,550)	-0.76%	4,801	0.38%	
August-05	1,225		15,971	7,713	178,493	203,402		25,824	1,254,249	1,483,475	759	0.05%	969	0.48%	(25)	0.00%	

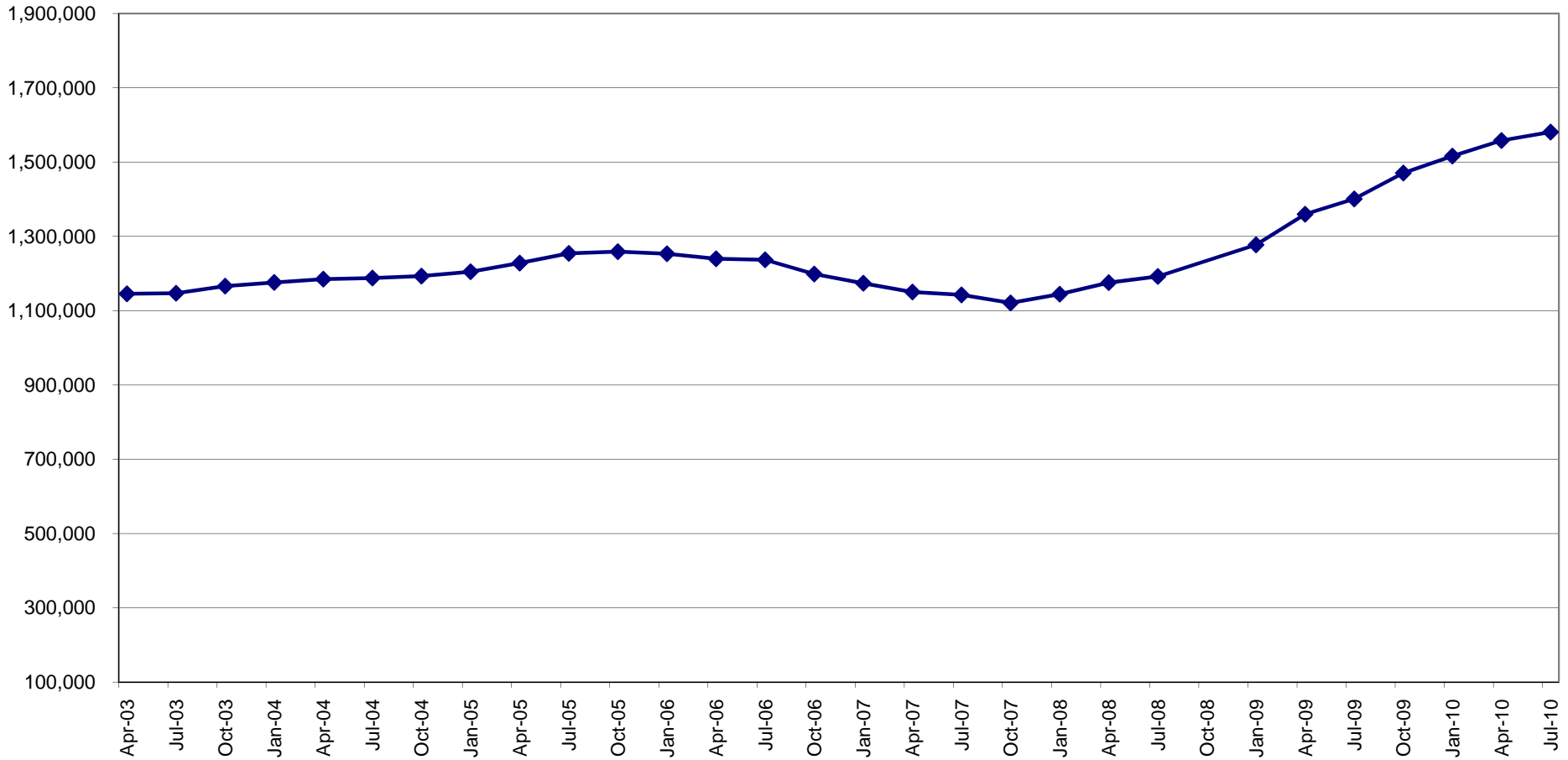
		Title XXI-Funded															
		Medicaid <1 185-200% FPL	Medicaid for Teens (ended 10/02)	MediKids	CMS Network	Healthy Kids	Title XXI TOTAL	MediKids Full Pay (eff. 7/06)	Healthy Kids Non-Title XXI and Full Pay	Title XIX Medicaid	Total Florida KidCare Enrollment	Total Enrollment Change from Previous Month	Total Enrollment % Change from Previous Month	Title XXI Only Enrollment Change from Previous Month	Title XXI Only Enrollment % Change from Previous Month	Title XIX Only Enrollment Change from Previous Month	Title XIX Only Enrollment % Change from Previous Month
	September-05	1,235		16,618	7,786	177,683	203,322		25,435	1,259,497	1,488,254	4,779	0.32%	(80)	-0.04%	5,248	0.42%
	October-05	1,211		16,816	7,731	176,857	202,615		25,276	1,258,896	1,486,787	(1,467)	-0.10%	(707)	-0.35%	(601)	-0.05%
	November-05	1,201		16,990	7,727	173,140	199,058		25,250	1,259,519	1,483,827	(2,960)	-0.20%	(3,557)	-1.76%	623	0.05%
	December-05	1,184		18,322	7,728	166,663	193,897		27,325	1,250,386	1,471,608	(12,219)	-0.82%	(5,161)	-2.59%	(9,133)	-0.73%
	January-06	1,229		16,812	7,564	160,475	186,080		26,361	1,253,237	1,465,678	(5,930)	-0.40%	(7,817)	-4.03%	2,851	0.23%
	February-06	1,250		16,237	7,683	160,239	185,409		26,590	1,249,276	1,461,275	(4,403)	-0.30%	(671)	-0.36%	(3,961)	-0.32%
	March-06	1,291		15,980	8,118	160,089	185,478		27,123	1,243,013	1,455,614	(5,661)	-0.39%	69	0.04%	(6,263)	-0.50%
	April-06	1,282		16,155	8,426	163,863	189,726		25,899	1,239,738	1,455,363	(251)	-0.02%	4,248	2.29%	(3,275)	-0.26%
	May-06	1,211		15,898	8,812	163,671	189,592		26,414	1,237,699	1,453,705	(1,658)	-0.11%	(134)	-0.07%	(2,039)	-0.16%
	June-06	1,200		16,684	9,159	166,596	193,639		26,840	1,234,901	1,455,380	1,675	0.12%	4,047	2.13%	(2,798)	-0.23%
	July-06	1,202		17,472	9,496	168,504	196,674		27,051	1,236,913	1,460,638	5,258	0.36%	3,035	1.57%	2,012	0.16%
	August-06	1,205		17,984	9,668	168,491	197,348		27,378	1,220,746	1,445,472	(15,166)	-1.04%	674	0.34%	(16,167)	-1.31%
	September-06	1,177		19,038	10,012	167,804	198,031	59	26,640	1,209,811	1,434,541	(10,931)	-0.76%	683	0.35%	(10,935)	-0.90%
	October-06	1,163		19,471	10,079	165,113	195,826	215	25,905	1,198,674	1,420,620	(13,921)	-0.97%	(2,205)	-1.11%	(11,137)	-0.92%
	November-06	1,165		19,946	10,647	168,814	200,572	382	25,292	1,194,798	1,421,044	424	0.03%	4,746	2.42%	(3,876)	-0.32%
	December-06	1,142		20,340	11,004	169,130	201,616	543	25,183	1,181,425	1,408,767	(12,277)	-0.86%	1,044	0.52%	(13,373)	-1.12%
	January-07	1,103		20,765	11,555	170,791	204,214	716	25,430	1,173,813	1,404,173	(4,594)	-0.33%	2,598	1.29%	(7,612)	-0.64%
	February-07	1,116		21,431	11,753	169,721	204,021	886	25,363	1,163,813	1,394,083	(10,090)	-0.72%	(193)	-0.09%	(10,000)	-0.85%
	March-07	1,104		21,294	12,269	172,959	207,626	1,034	25,872	1,153,988	1,388,520	(5,563)	-0.40%	3,605	1.77%	(9,825)	-0.84%
	April-07	1,095		22,057	12,835	179,001	214,988	1,249	24,813	1,150,275	1,391,325	2,805	0.20%	7,362	3.55%	(3,713)	-0.32%
	May-07	1,077		23,474	13,434	182,360	220,345	1,334	25,292	1,142,483	1,389,454	(1,871)	-0.13%	5,357	2.49%	(7,792)	-0.68%
	June-07	1,091		24,288	13,862	185,334	224,575	1,511	25,744	1,137,528	1,389,358	(96)	-0.01%	4,230	1.92%	(4,955)	-0.43%
	July-07	1,035		25,020	13,838	184,282	224,175	1,670	25,381	1,127,825	1,379,051	(10,307)	-0.74%	(400)	-0.18%	(9,703)	-0.85%
	August-07	1,010		25,782	13,971	184,875	225,638	1,783	25,525	1,122,694	1,375,640	(3,411)	-0.25%	1,463	0.65%	(5,131)	-0.45%
	September-07	845		25,791	14,142	185,121	225,899	1,862	25,309	1,121,499	1,374,569	(1,071)	-0.08%	261	0.12%	(1,195)	-0.11%
	October-07	850		25,619	14,357	185,476	226,302	1,903	24,916	1,120,848	1,373,969	(600)	-0.04%	403	0.18%	(651)	-0.06%
	November-07	884		25,947	14,732	187,660	229,223	2,023	24,285	1,135,935	1,391,466	17,497	1.27%	2,921	1.29%	15,087	1.35%
	December-07	887		25,864	15,056	189,370	231,177	2,027	24,364	1,139,422	1,396,990	5,524	0.40%	1,954	0.85%	3,487	0.31%
	January-08	806		26,141	15,305	188,315	230,567	2,150	23,901	1,144,420	1,401,038	4,048	0.29%	(610)	-0.26%	4,998	0.44%
	February-08	836		26,473	15,416	187,647	230,372	2,250	23,971	1,151,498	1,408,091	7,053	0.50%	(195)	-0.08%	7,078	0.62%
	March-08	792		26,136	15,673	188,295	230,896	2,303	23,085	1,162,242	1,418,526	10,435	0.74%	524	0.23%	10,744	0.93%
	April-08	746		25,542	16,247	186,478	229,013	2,385	23,262	1,175,496	1,430,156	11,630	0.82%	(1,883)	-0.82%	13,254	1.14%
	May-08	732		25,617	16,270	185,977	228,596	2,424	23,595	1,188,960	1,443,575	13,419	0.94%	(417)	-0.18%	13,464	1.15%
*	June-08	769		25,221	16,214	189,022	231,226	2,437	24,022	1,201,295	1,458,980	15,405	1.07%	2,630	1.15%	12,335	1.04%
*	July-08	754		25,747	16,964	181,604	225,069	2,604	23,276	1,192,134	1,443,083	(15,897)	-1.09%	(6,157)	-2.66%	(9,161)	-0.76%
*	August-08	822		24,466	17,062	177,777	220,127	2,505	23,231	1,233,626	1,479,489	36,406	2.52%	(4,942)	-2.20%	41,492	3.48%
*	September-08	758		22,614	16,808	173,506	213,686	2,263	22,805	1,229,848	1,468,602	(10,887)	-0.74%	(6,441)	-2.93%	(3,778)	-0.31%
*	October-08	775		23,700	17,317	166,969	208,761	2,140	21,422	1,232,651	1,464,974	(3,628)	-0.25%	(4,925)	-2.30%	2,803	0.23%
*	November-08	786		18,791	19,116	182,988	221,681	1,948	21,195	1,253,963	1,498,787	33,813	2.31%	12,920	6.19%	21,312	1.73%

		Title XXI-Funded															
		Medicaid <1 185-200% FPL	Medicaid for Teens (ended 10/02)	MediKids	CMS Network	Healthy Kids	Title XXI TOTAL	MediKids Full Pay (eff. 7/06)	Healthy Kids Non-Title XXI and Full Pay	Title XIX Medicaid	Total Florida KidCare Enrollment	Total Enrollment Change from Previous Month	Total Enrollment % Change from Previous Month	Title XXI Only Enrollment Change from Previous Month	Title XXI Only Enrollment % Change from Previous Month	Title XIX Only Enrollment Change from Previous Month	Title XIX Only Enrollment % Change from Previous Month
*	December-08	795		19,514	19,919	178,489	218,717	2,011	20,003	1,272,342	1,513,073	14,286	0.95%	(2,964)	-1.34%	18,379	1.47%
*	January-09	747		18,781	20,236	178,428	218,192	1,900	19,340	1,277,301	1,516,733	3,660	0.24%	(525)	-0.24%	4,959	0.39%
*	February-09	749		19,446	20,946	175,196	216,337	1,978	19,173	1,289,840	1,527,328	10,595	0.70%	(1,855)	-0.85%	12,539	0.98%
*	March-09	754		20,330	22,397	177,997	221,478	2,141	18,967	1,307,890	1,550,476	23,148	1.52%	5,141	2.38%	18,050	1.40%
*	April-09	807		21,285	22,326	176,196	220,614	2,327	18,905	1,359,709	1,601,555	51,079	3.29%	(864)	-0.39%	51,819	3.96%
*	May-09	758		21,820	22,731	176,473	221,782	2,307	19,328	1,358,838	1,602,255	700	0.04%	1,168	0.53%	(871)	-0.06%
	June-09	739		22,345	23,208	178,736	225,028	2,298	19,356	1,375,206	1,621,888	19,633	1.23%	3,246	1.46%	16,368	1.20%
	July-09	754		23,036	23,270	181,644	228,704	2,343	18,960	1,400,909	1,650,916	29,028	1.79%	3,676	1.63%	25,703	1.87%
	August-09	794		24,609	23,152	182,692	231,247	2,577	18,787	1,431,007	1,683,618	32,702	1.98%	2,543	1.11%	30,098	2.15%
	September-09	811		25,155	22,389	181,518	229,873	2,713	18,349	1,450,881	1,701,816	18,198	1.08%	(1,374)	-0.59%	19,874	1.39%
	October-09	827		25,045	22,075	182,654	230,601	2,693	17,504	1,470,659	1,721,457	19,641	1.15%	728	0.32%	19,778	1.36%
	November-09	835		26,459	22,368	185,014	234,676	2,928	17,926	1,492,393	1,747,923	26,466	1.54%	4,075	1.77%	21,734	1.48%
	December-09	822		25,266	22,444	188,139	236,671	2,816	18,080	1,510,810	1,768,377	20,454	1.17%	1,995	0.85%	18,417	1.23%
	January-10	793		25,854	22,116	188,417	237,180	2,928	17,773	1,516,208	1,774,089	5,712	0.32%	509	0.22%	5,398	0.36%
	February-10	773		26,119	22,263	189,891	239,046	3,014	18,137	1,529,964	1,790,161	16,072	0.91%	1,866	0.79%	13,756	0.91%
	March-10	782		26,182	22,517	190,576	240,057	3,112	18,518	1,545,588	1,807,275	17,114	0.96%	1,011	0.42%	15,624	1.02%
	April-10	764		26,594	22,912	196,005	246,275	3,233	19,333	1,558,024	1,826,865	19,590	1.08%	6,218	2.59%	12,436	0.80%
	May-10	763		27,286	23,098	200,567	251,714	3,371	19,863	1,561,588	1,836,536	9,671	0.53%	5,439	2.21%	3,564	0.23%
	June-10	759		27,909	23,313	202,236	254,217	3,491	20,105	1,574,521	1,852,334	15,798	0.86%	2,503	0.99%	12,933	0.83%
	July-10	772		28,044	23,347	203,579	255,742	3,508	19,910	1,580,722	1,859,882	7,548	0.41%	1,525	0.60%	6,201	0.39%

Table created by the Florida Department of Health from data provided by the Agency for Health Care Administration.

*AHCA NOTE: Healthy Kids, CMS Network and MediKids enrollment numbers are subject to change after further reconciliation is done.

Medicaid (Title XIX) Enrollment Trend, Ages 0-18



	Apr-03	Jul-03	Oct-03	Jan-04	Apr-04	Jul-04	Oct-04	Jan-05	Apr-05	Jul-05	Oct-05	Jan-06	Apr-06	Jul-06	Oct-06	Jan-07	Apr-07	Jul-07	Oct-07	Jan-08	Apr-08	Jul-08	Jan-09	Apr-09	July-09	Oct-09	Jan-10	April-10	July-10
Title XIX Enrollment	1,145,389	1,146,925	1,166,047	1,176,007	1,184,898	1,187,878	1,193,093	1,204,874	1,228,081	1,254,274	1,258,896	1,253,237	1,239,738	1,236,913	1,198,674	1,173,813	1,150,275	1,142,483	1,120,848	1,144,420	1,175,496	1,192,134	1,277,301	1,359,709	1,400,909	1,470,659	1,516,208	1,558,024	1,580,722